

SERVICE MANUAL

**EXCAVATOR
R16-9**

HYUNDAI

SECTION 1 GENERAL

Group 1 Safety Hints	1-1
Group 2 Specifications	1-9

SECTION 2 STRUCTURE AND FUNCTION

Group 1 Pump Device	2-1
Group 2 Main Control Valve	2-8
Group 3 Swing Device	2-37
Group 4 Travel Device	2-47
Group 5 RCV Lever	2-58
Group 6 RCV Pedal	2-65

SECTION 3 HYDRAULIC SYSTEM

Group 1 Hydraulic Circuit	3-1
Group 2 Main Circuit	3-2
Group 3 Pilot Circuit	3-5
Group 4 Single Operation	3-9
Group 5 Combined Operation	3-21

SECTION 4 ELECTRICAL SYSTEM

Group 1 Component Location	4-1
Group 2 Monitoring system	4-3
Group 3 Electrical Circuit	4-9
Group 4 Electrical Component Specification	4-21
Group 5 Connectors	4-27

SECTION 5 TROUBLESHOOTING

Group 1 Before Troubleshooting	5-1
Group 2 Hydraulic and Mechanical System	5-4
Group 3 Electrical System	5-24

SECTION 6 MAINTENANCE STANDARD

Group 1 Operational Performance Test	6-1
Group 2 Major Components	6-20
Group 3 Track and Work Equipment	6-31

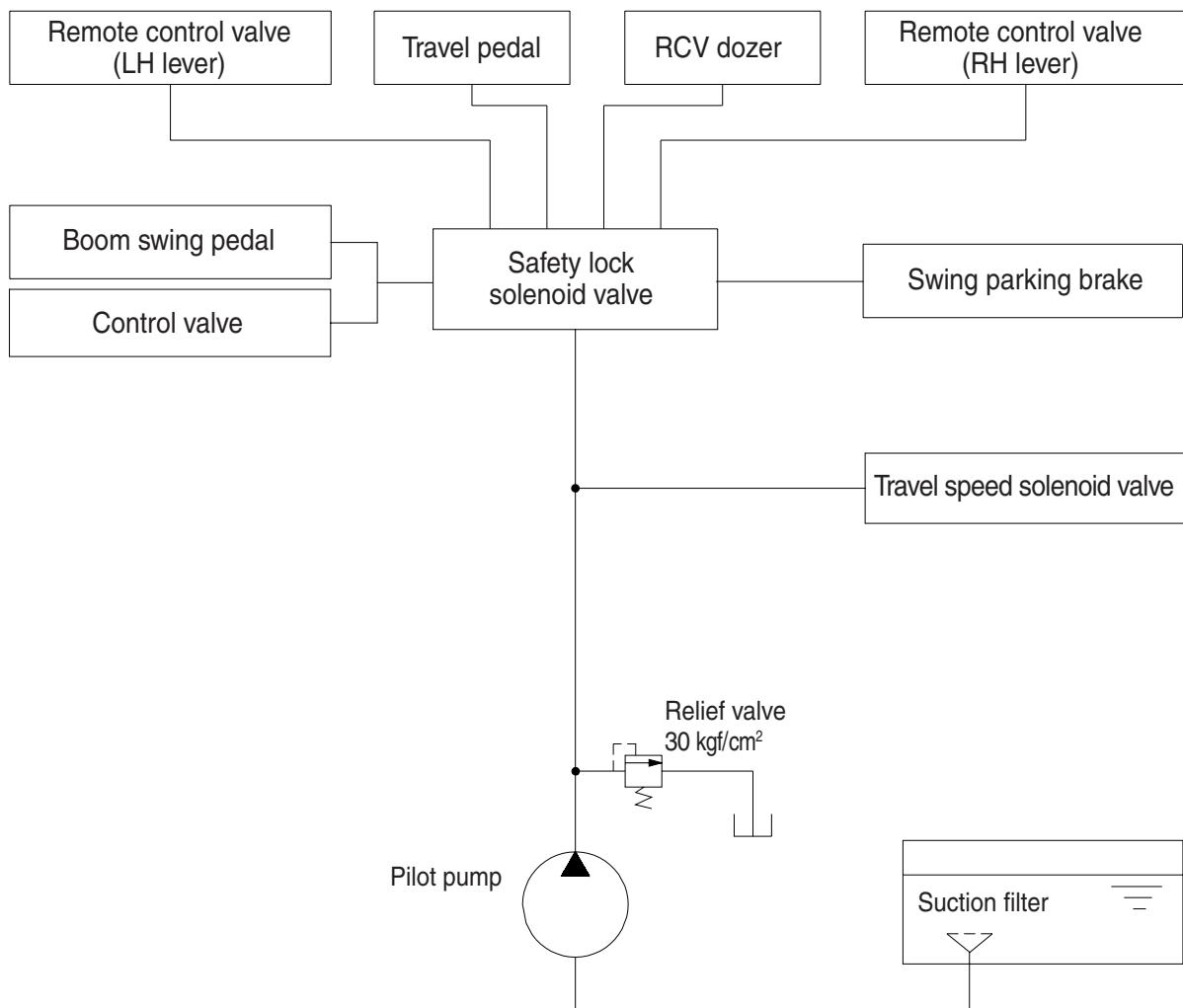
SECTION 7 DISASSEMBLY AND ASSEMBLY

Group 1 Precaution	7-1
Group 2 Tightening Torque	7-4
Group 3 Pump Device	7-7
Group 4 Main Control Valve	7-22
Group 5 Swing Device	7-36
Group 6 Travel Device	7-54
Group 7 RCV Lever	7-84
Group 8 Turning Joint	7-98
Group 9 Boom, Arm and Bucket Cylinder	7-103
Group 10 Undercarriage	7-123
Group 11 Work Equipment	7-134

SECTION 8 COMPONENT MOUNTING TORQUE

Group 1 Introduction Guide	8-1
Group 2 Engine System	8-2
Group 3 Electric System	8-4
Group 4 Hydraulic System	8-5
Group 5 Undercarriage	8-7
Group 6 Structure	8-8
Group 7 Work Equipment	8-10

GROUP 3 PILOT CIRCUIT



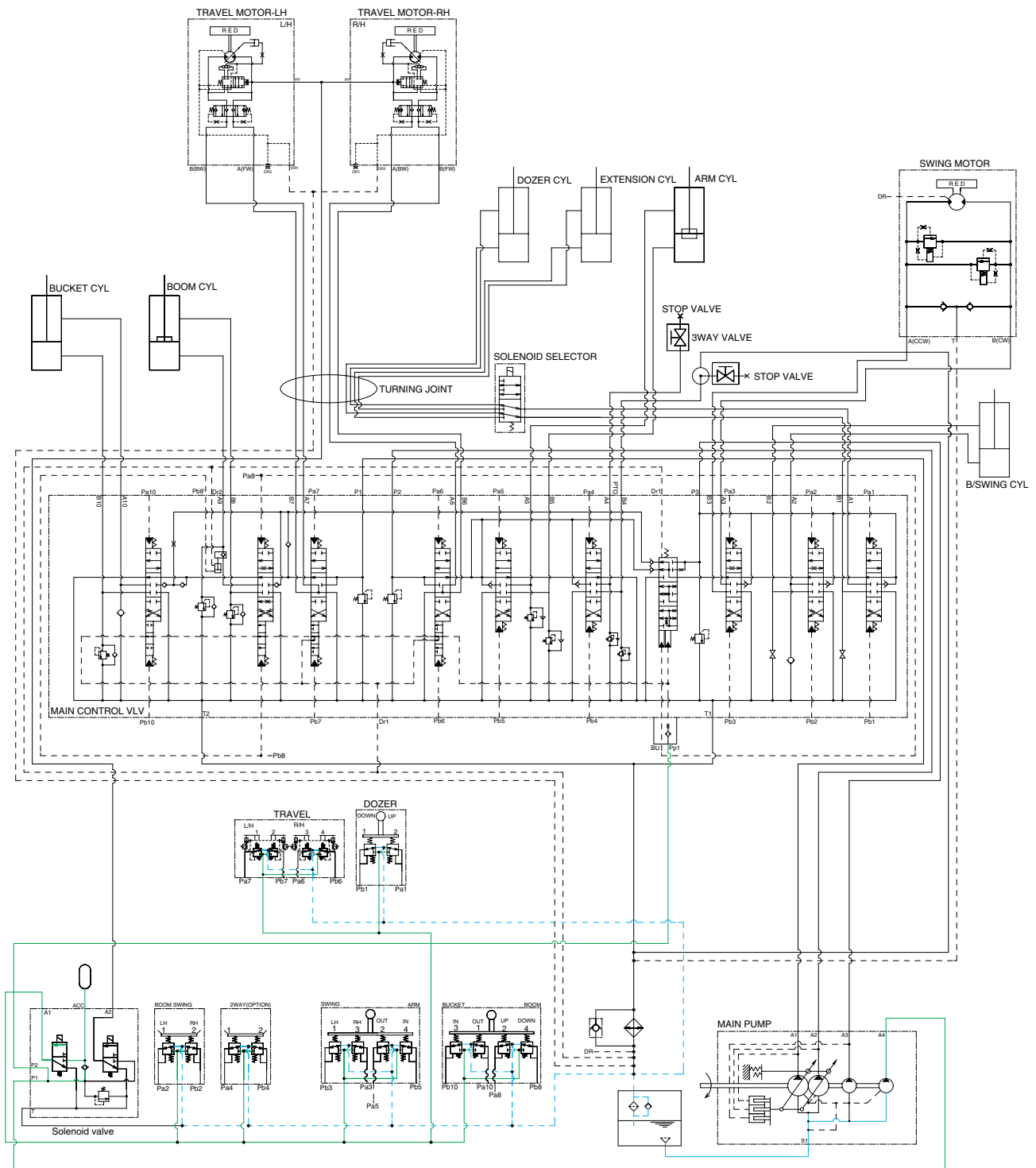
1693HC00

The pilot circuit consists of suction circuit, delivery circuit and return circuit.

The pilot pump is provided with relief valve, receives the oil from the hydraulic tank through the suction filter.

The discharged oil from the pilot pump flows to the remote control valve through solenoid valve assemblies, swing parking brake, main control valve and safety lock solenoid valve.

1. SUCTION, DELIVERY AND RETURN CIRCUIT



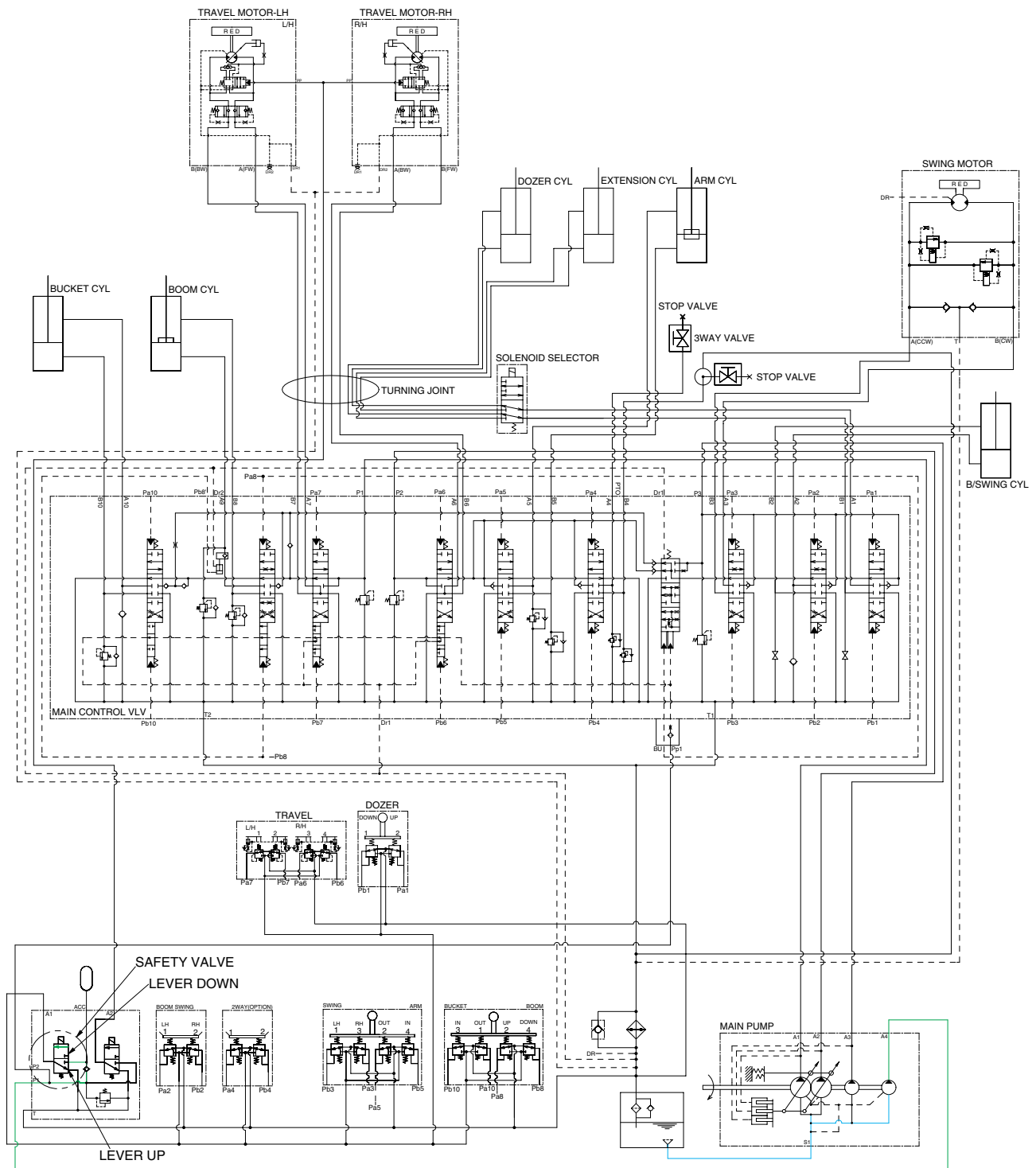
1693HC03

The pilot pump receive oil from the hydraulic tank. The discharged oil from the pilot pump flows to the safety solenoid valve. The pilot relief valve is provided in the solenoid valve for limiting the pilot circuit pressure.

The oil filtered by line filter flows remote control valve, MCV and swing port through safety solenoid valve.

The return oil flow into the hydraulic tank.

2. SAFETY VALVE (SAFETY LEVER)

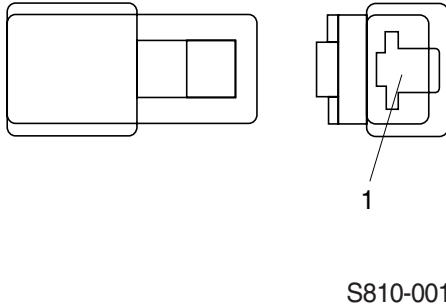
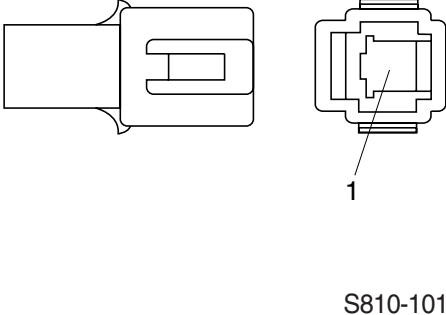
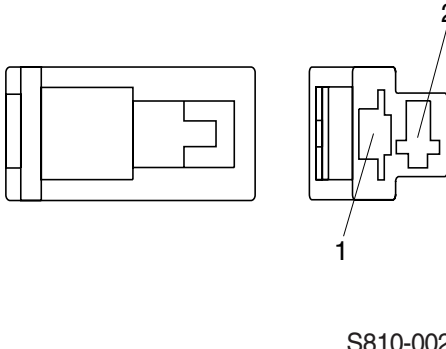
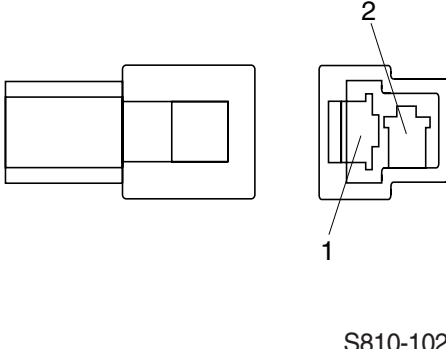
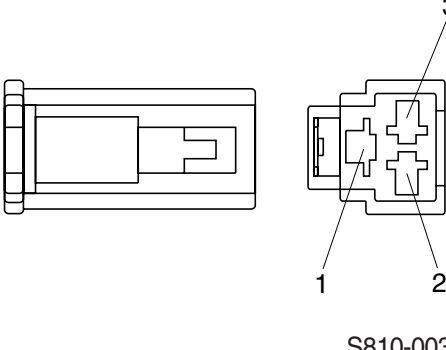
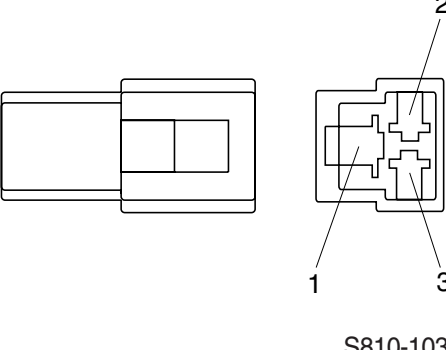
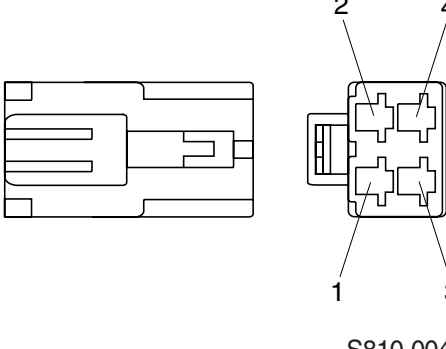
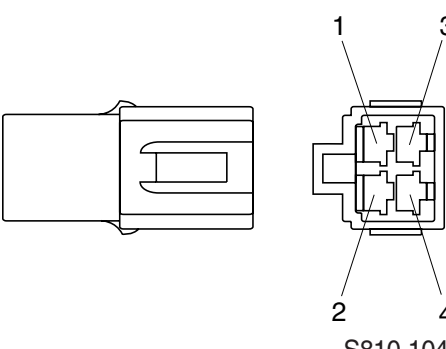


1693HC04

When the lever of the safety solenoid valve is moved downward, oil flows into the remote control valve through solenoid valve.

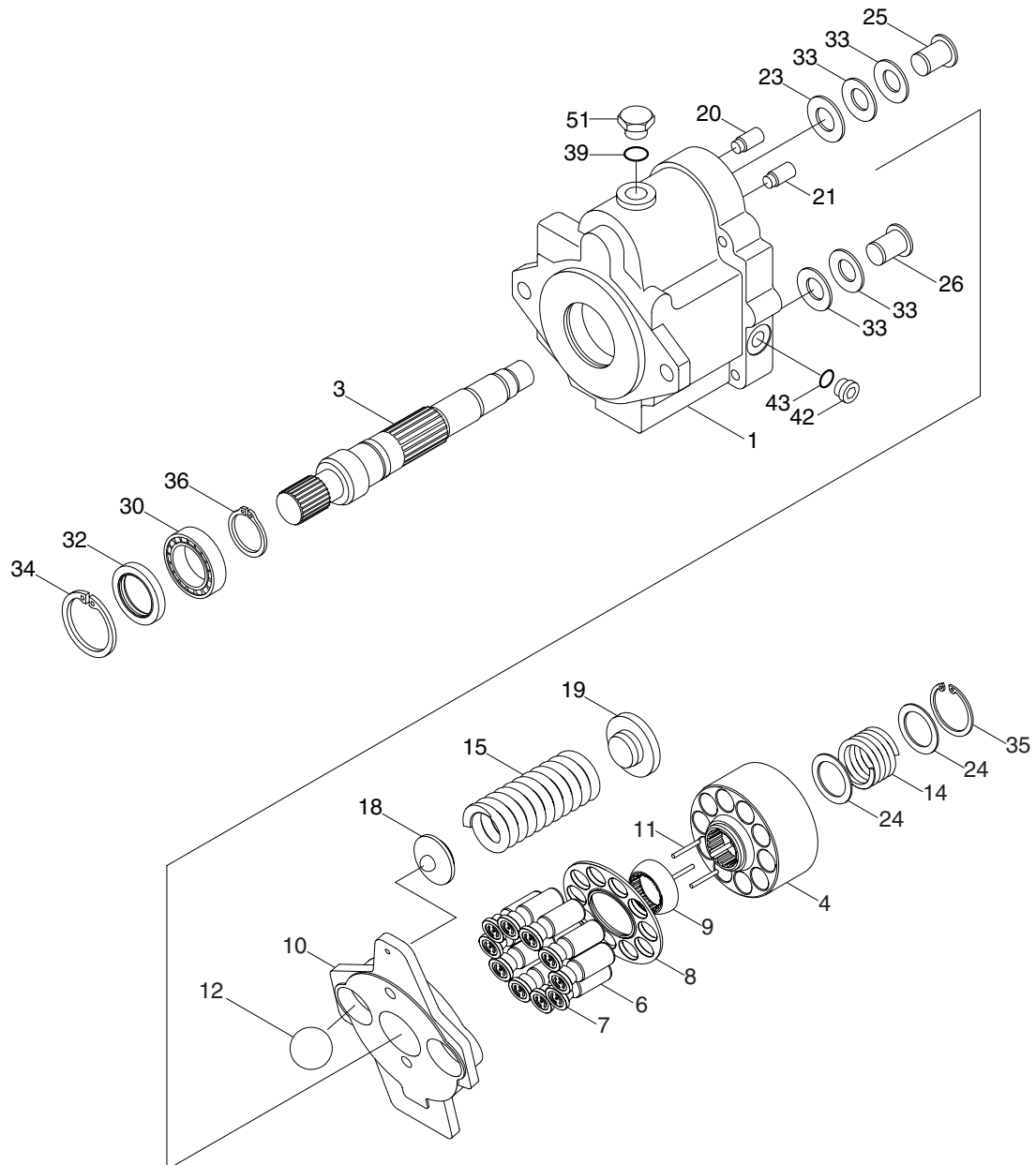
When the lever of the safety solenoid valve is moved upward, oil does not flow into the remote control valve, because of the blocked port.

4) CN TYPE CONNECTOR

No. of pin	Receptacle connector (female)	Plug connector (male)
1	 <p style="text-align: center;">S810-001202</p>	 <p style="text-align: center;">S810-101202</p>
2	 <p style="text-align: center;">S810-002202</p>	 <p style="text-align: center;">S810-102202</p>
3	 <p style="text-align: center;">S810-003202</p>	 <p style="text-align: center;">S810-103202</p>
4	 <p style="text-align: center;">S810-004202</p>	 <p style="text-align: center;">S810-104202</p>

2. MAIN PUMP

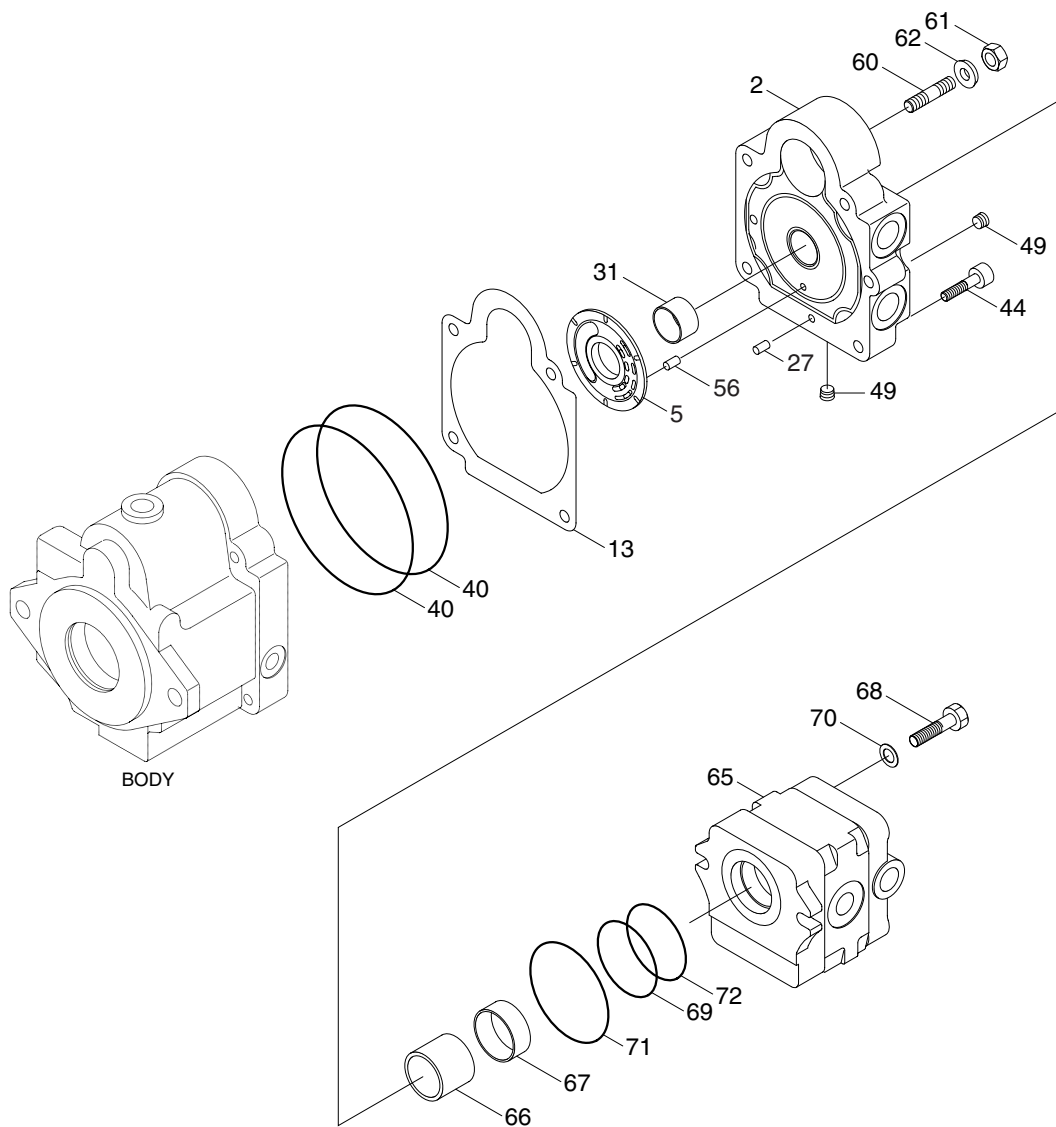
1) STRUCTURE (1/2)



1697PM01

1	Body S	14	Spring C	30	Ball bearing
3	Shaft	15	Spring T1	32	Oil seal
4	Cylinder barrel	18	Spring holder	33	Dish spring
6	Piston	19	Spring guide	34	Snap ring
7	Shoe	20	Pin	35	Snap ring
8	Shoe holder	21	Rod G	36	Snap ring
9	Barrel holder	23	Washer	39	O-ring
10	Swash plate	24	Retainer	42	Plug
11	Needle	25	Stopper pin A	43	O-ring
12	Ball	26	Stopper pin B	51	Plug

STRUCTURE (2/2)



- | | | | | | |
|----|----------------|----|-------------|----|--------|
| 2 | Body H | 49 | Plug | 67 | Collar |
| 5 | Valve plate | 56 | Spring pin | 68 | Screw |
| 13 | Packing | 60 | Screw | 69 | O-ring |
| 27 | Pin | 61 | Nut | 70 | Washer |
| 31 | Needle bearing | 62 | Seal washer | 71 | O-ring |
| 40 | O-ring | 65 | Gear pump | 72 | O-ring |
| 44 | Screw | 66 | Coupling | | |

1697PM02

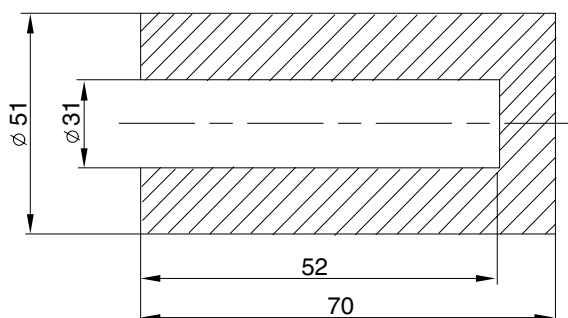
3. ASSEMBLE AND DISASSEMBLE

1) General precautions

- (1) Before disassembling, it is important to have fully understood the internal structure of the pump.
 - ※ The gasket (13), oil seal (32) and O-rings will be probably damaged when you disassemble it, so be sure to have prepared spares.
- (2) After having drained oil inside the pump, wash the pump and put it on a working bench covered with clean paper, cloth, or rubber mat for disassembling and assembling. Then, disassemble and assemble the pump slowly and carefully with necessary tools. Use care not to scratch even slightly, and take proper measures to prevent foreign matters from entering the assembly.

2) Tools

Tool name	Size	Quantity
Hexagon wrench	4, 6, 8 mm	1 each
Circlip player	For hole	1
Spanner wrench	13 mm	1
Torque wrench	45N (JIS B 4650) 90N (JIS B 4650)	1 1
Resin hammer	-	1
Special tooling for oil seal	See below	1
Seal kit	-	1 set
Grease	-	Small amount



Special tooling for oil seal

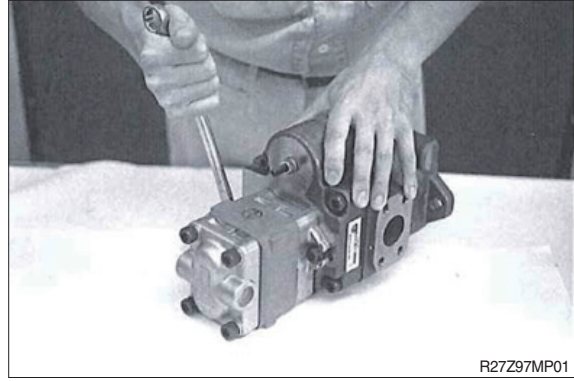
R27Z97MP98

3) DISASSEMBLING

(1) Disassembling of gear pump

Remove two screws (68) with spanner wrench 13 mm, and after that remove gear pump (65), collar (67) and coupling (66).

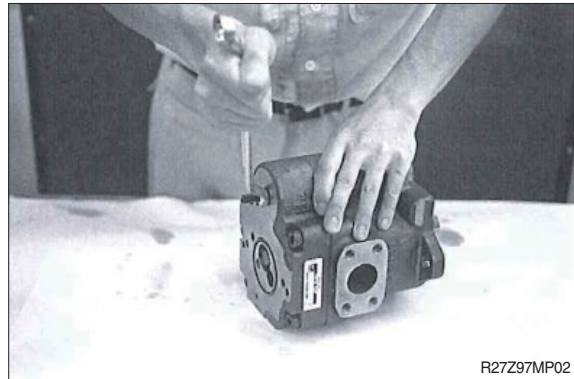
- ※ Coupling (66) and collar (67) may be attached with gear pump kit (65).



(2) Remove the adjustment screw

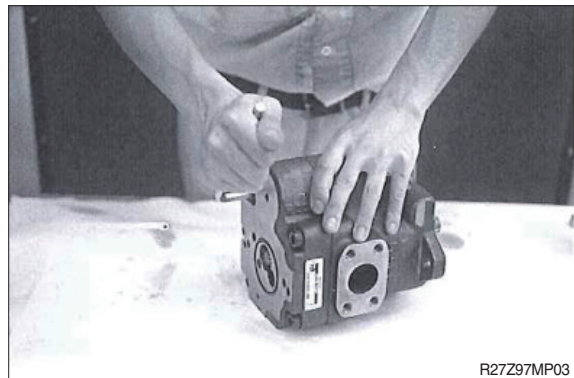
Loose hexagon nut (61) with spanner wrench 13 mm, then remove the adjustment screw (60) with hexagon wrench 4 mm.

- ※ Suggest you to measure the outside length of the adjustment screw. Because it is a good help when you readjust it after reassembling.



(3) Separation of body S and body H

Remove five screws (44) with hexagon wrench 8 mm.

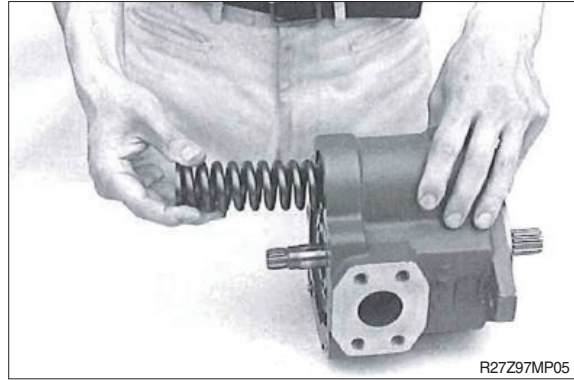


- ※ If you tap the part of inserted spring of body H with hummer softly, it is easy for separation.



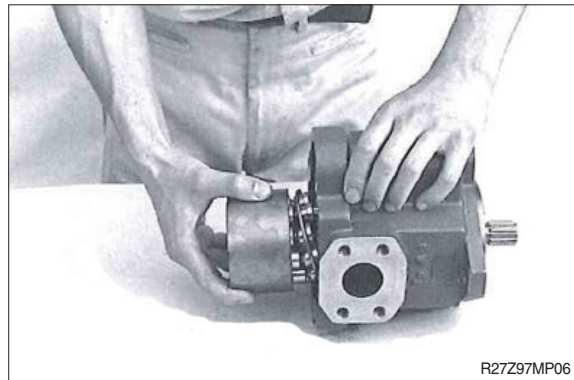
(4) Disassembling of body S kit

Remove spring T1 (15) from body S kit, then take off spring holder (18).



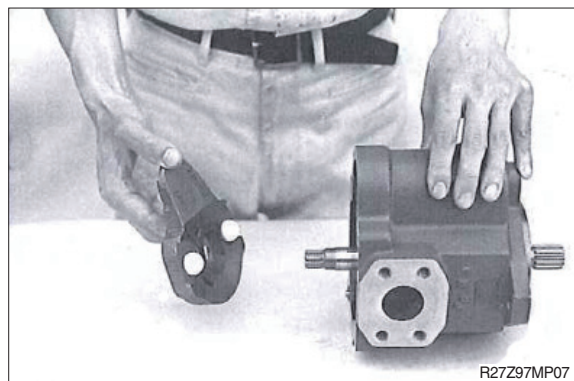
(5) Disassembling of body S kit

Remove cylinder barrel kit.



(6) Disassembling of body S kit

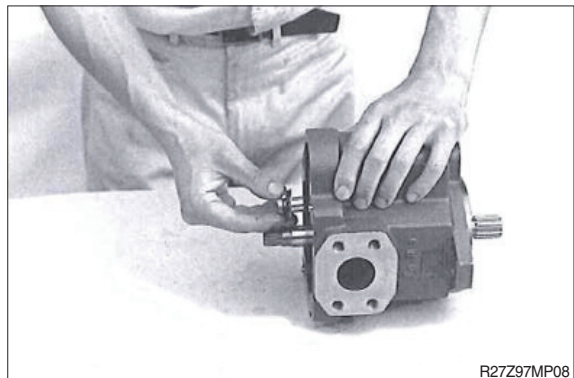
Remove swash plate (10) and two balls (12).



(7) Disassembling of body S kit

Remove stopper pin A (25), stopper pin B (26), dish springs (33), washer (23), rod G (21) and rod C (22).

- ※ The length of the stopper pin A and B is different. Pay attention not to swap when reassembling.
- ※ Refer to the parts list about number and position of washer (23).



Diesel Engines

ABS	Agco-Sisu
Akasaka	Baudouin
BMW	Bukh
Caterpillar	CHN 25/34
Cummins	Daihatsu
Detroit	Deutz
Doosan-Daewoo	Fiat
Ford	GE
Grenaa	Guascor
Hanshin	Hatz
Hino	Honda
Hyundai	Isotta
Isuzu	Iveco
John-Deere	Kelvin
Kioti	Komatsu
Kubota	Liebherr
Lister	Lombardini
MAK	MAN B&W
Mercedes	Mercruiser
Mirrlees BS	Mitsubishi
MTU	MWM
Niigata	Paxman
Perkins	Pielstick
Rolls / Bergen	Ruggerini
Ruston	Scania
Shibaura	Sisu-Valmet
SKL	Smit-Bolnes
Sole	Stork
VM-Motori	Volvo
Volvo Penta	Westerbeke
Wichmann	Yanmar

Machinery

ABG	Airman
Akerman	Ammann
Astra	Atlas Copco
Atlas Weyha.	Atlet
Bell	Bendi
Bigjoe	Bobcat
Bomag	BT
Carelift	Case
Caterpillar	Cesab
Challenger	Champion
Claas	Clark
Combilift	Crown
Daewoo-Doosan	Demag
Deutz-Fahr	Dressta

Machinery

Drott	Dynapack
Extec	Faun
Fendt	Fiat
Fiatallis	Flexicoil
Furukawa	Gehl
Genie	Grove-gmk
Halla	Hamm
Hangcha	Hanix
Hanomag	Hartl
Haulpack	Hiab
Hidromek	Hino truck
Hitachi	Hyster
Hyundai	IHI
Ingersoll-rand	JCB
JLG	John-Deere
Jungheinrich	Kalmar
Kato	Kioti
Kleeman	Kobelco
Komatsu	Kramer
Kubota	Lamborghini
Landini	Liebherr
Linde	Link-belt
Manitou	Massey-Ferg.
Mccormick	MDI-Yutani
Mitsubishi	Moxy
Mustang	Neusson
New-Holland	Nichiyu
Nissan	OK
OM-Pimespo	others-tech
Pel-Job	PH-mining
Poclain	Powerscreen
Same	Samsung
Sandvik	Scania
Schaefer	Schramm
Sennebogen	Shangli
Shibaura	Steiger
Steinbock	Steyr
Still	Sumitomo
Super-pac	Tadano
Takeuchi	TCM
Terex	Toyota
Valpadana	Venieri
Versatile	Vogele
Volvo	Weidemann
Wirtgen	Yale
YAM	Yanmar